



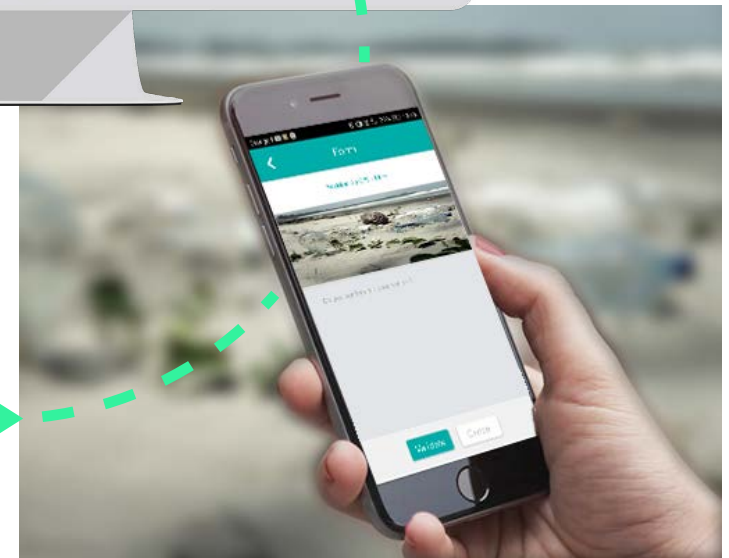
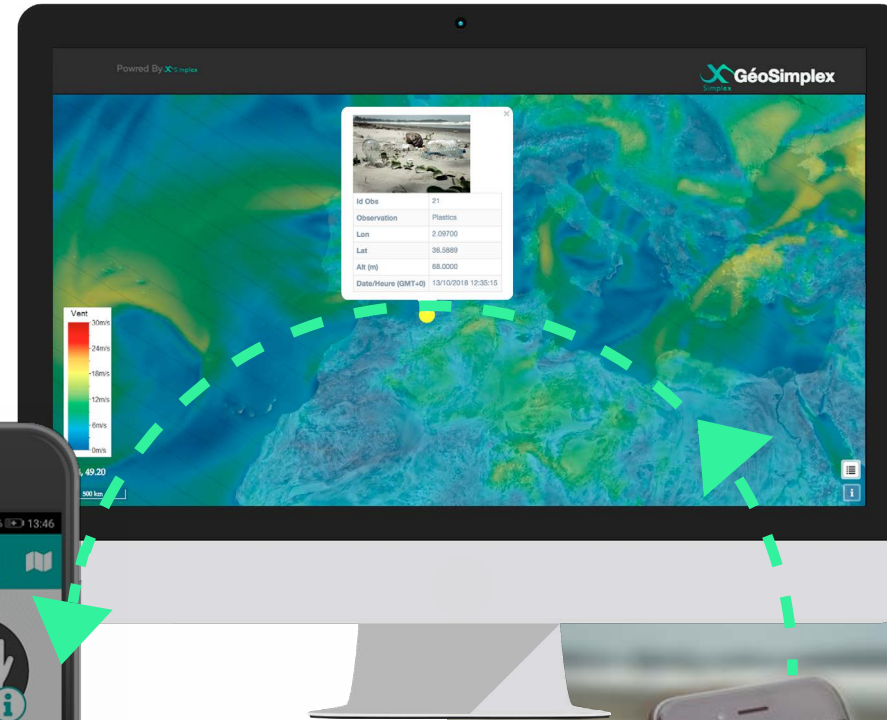
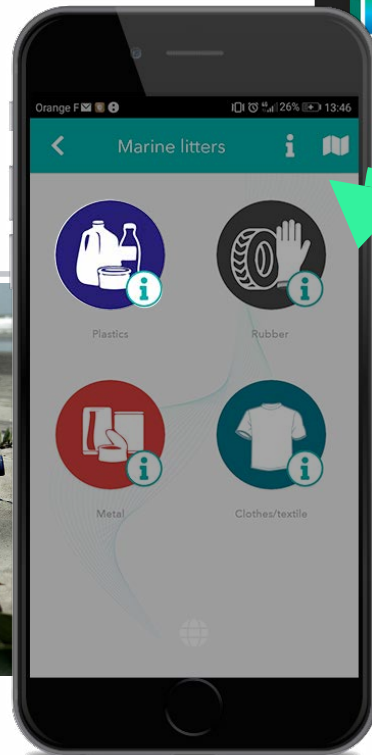
# Simplex

Observe & share your environment

# THE SIMPLEX ECOSYSTEM

SIMPLEX is a **participative monitoring system**, contextualized by geographic and environmental data. It includes a :

1. **Smartphone application** to quickly and efficiently **gather field information**.
2. **Web application** to **synthesize, analyse, interpret and share results in real time**



# OUR HEADLINE CAMPAIGN

A jellyfish observatory on the French Mediterranean Coast



**35,000**

*observations*



**64,000**

*users over  
the summer of 2018*



**7,000**

*registered  
participants*

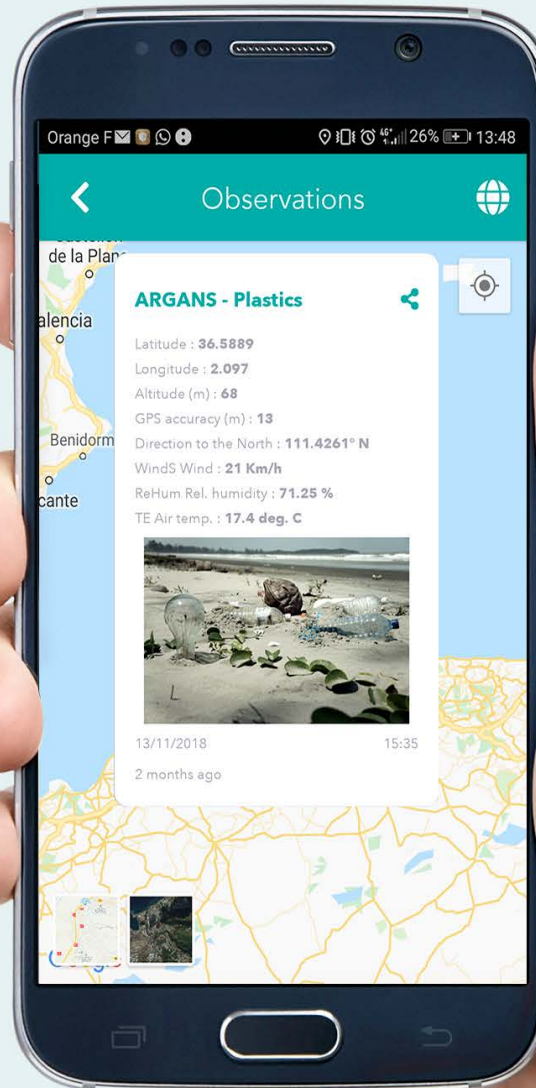


**1.8 M**

*visits*

Those promising statistics illustrate **the strength** of the Simplex system enabled by **mobilizing** its community around this campaign.

# OUR MOBILE APP

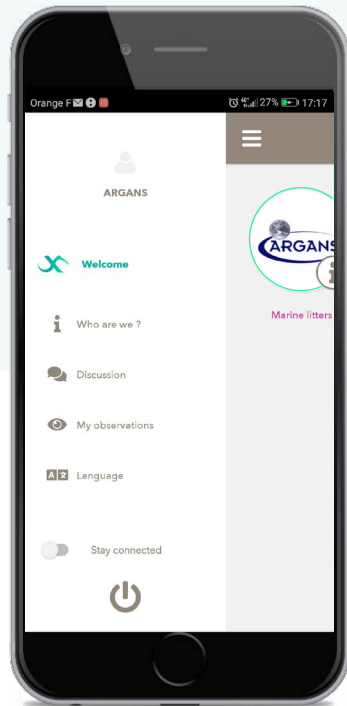


The Simplex app is **intuitive** and **free** for all.

It is available in a **dozen languages**, enabling international campaigns.



# Features

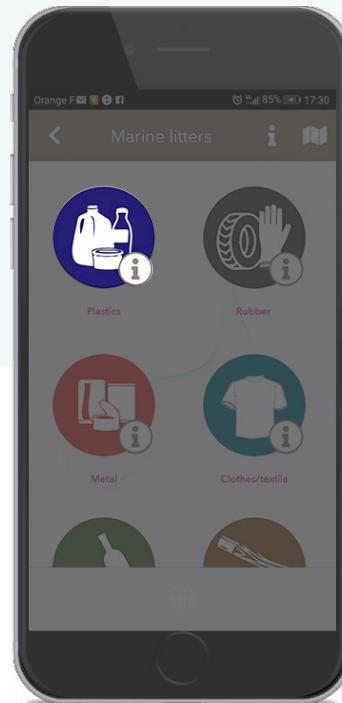


## JOIN

All campaigns are accessible from Simplex's main menu.

A user may freely participate in a **variety of public campaign** and also **join private campaign** through the administrator's approval or invitation.

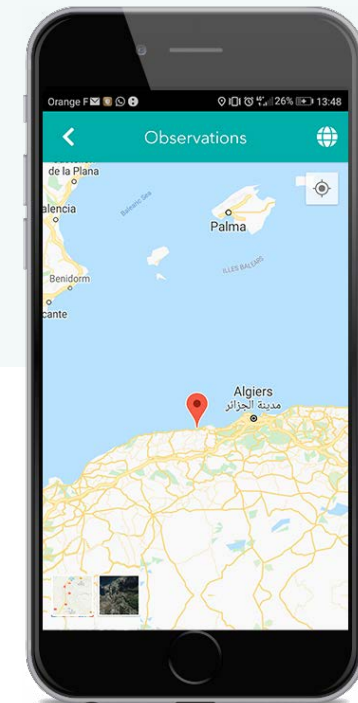
As a participant, **a user may report, browse and share field observations.**



## ORGANIZE

**Simplex** is a step by step field data **collection system**. In other words, each campaign can be **decomposed** in several steps conditioned by the previous choice.

To make observation **more comprehensive**, a user may add photos or answer optional questions prepared by the administrator.



## CONTEXTUALIZE

All observations are **geolocalized** and **contextualized**.

The app is **updated in real time** to enable seamless usage and operation.

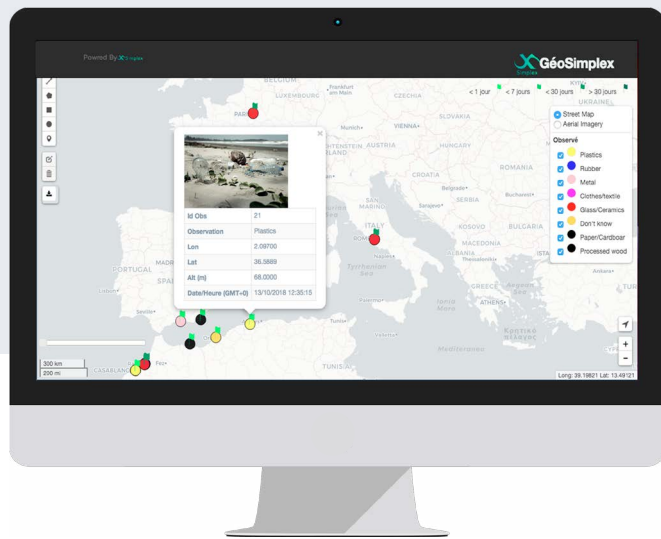
As such, **observations are visible on an interactive map** within the Simplex app as soon as they are made.

# OUR WEB APP





# Features

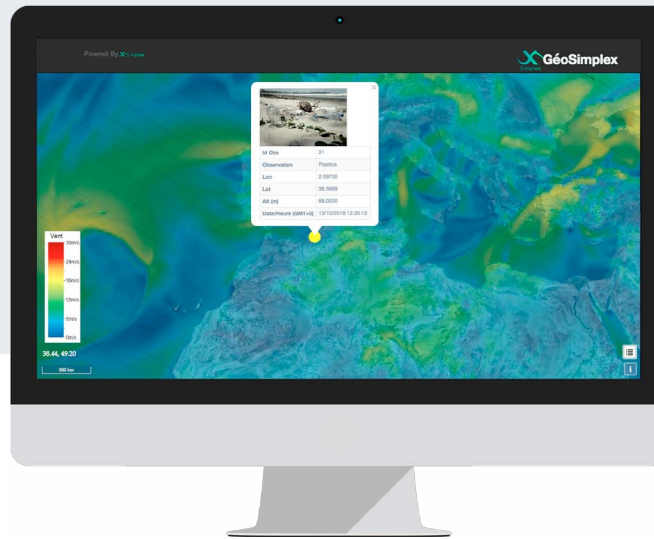


## COMMUNICATE

The Simplex web app gives you a **wider view** of the campaign. It consists of two main sections: the **visualization section** and the **administration section**.

The **visualization section** provides tools to **view and analyze all of the observations** of a given campaign in all their details on the entire globe.

The **administration section** enables campaign administrators to **manage all aspects** of their existing campaigns.

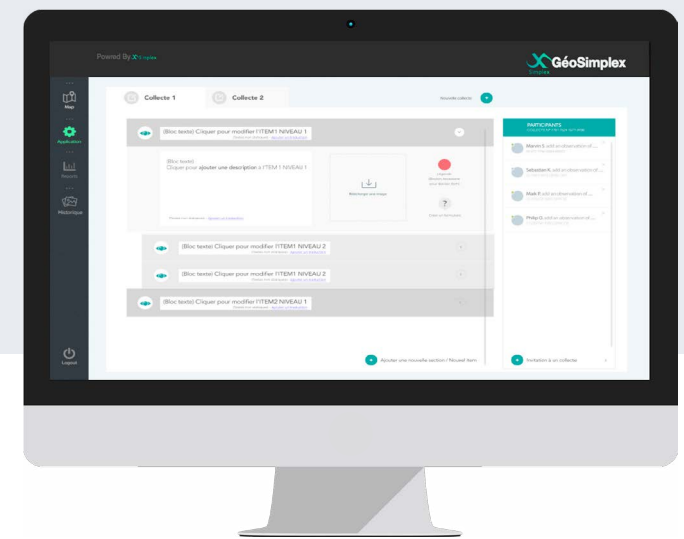


## CORRELATE

To maximize the value of a campaign, each **observation is coupled with its environmental context** in the database.

We offer a **wealth of geo referenced environmental data** such as temperature (air and water), wind velocity, air humidity, accurate position and altitude. To guarantee the best service possible, we integrate data from the Copernicus program.

Moreover, we aim to provide the highest level of **data interoperability** possible to make sure campaign data is compatible with geo referenced professional data of any kind.



## MANAGE

All of Simplex's administration tools are **accessible from its web interface**. The system is built to be **intuitive, customizable and easy to deploy** in as little time as possible.

It provides the means to keep your campaign organized through our **hierarchized collection form system**.

Finally, the system enables **control, evaluation and validation of all observations** in your campaign.

# ■ IN SHORT...

Simplex enables easy **citizen science or environmental monitoring initiatives**, all the while allowing for **expert exploitation and correlation of the data**.

Simplex **raises citizen awareness for societal and environmental issues** we are all facing. Anyone may then notice the impact of their own actions by their own means through **contributing to monitoring and diagnosing environmental problems**.

With Simplex, the everyday **observer is empowered to be part of the solution** to environmental challenges.





# INTERESTED ?

Please get in touch!



[simplex@acri.fr](mailto:simplex@acri.fr)



<https://geosimplex.eu/>



**Simplex**

260 Route du Pin Montard,  
BP 234, 06904 Sophia-Antipolis,  
France

